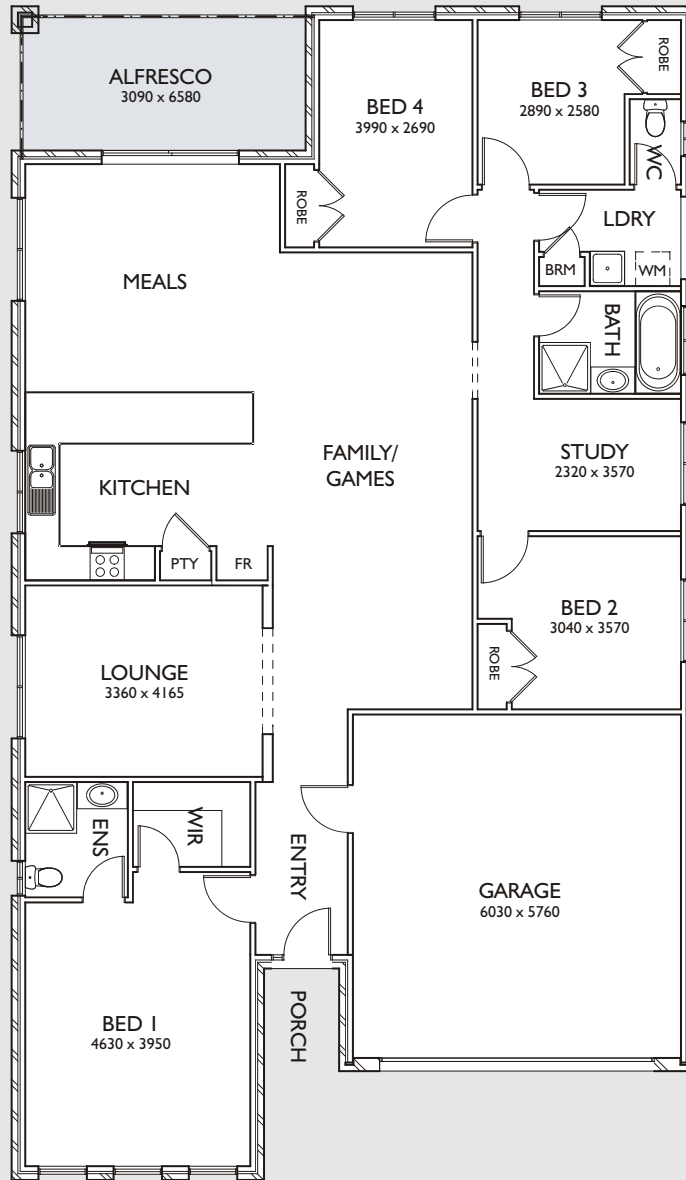


homes-victoria

This home includes:

- Alfresco Area
- 4 Bedrooms
- 2 Bathrooms
- Office/Study
- Double Garage
- Remote Sectional Door
- Convenient Entry from Garage
- Paved Driveway & Pathway



House Area
178.00sqm
Garage
39.12sqm
Alfresco
13.05sqm
Portico
6.02sqm
Total
236.20sqm

ava



Serenity
projects

www.serenityprojects.com.au

PRIME GROUP OF COMPANIES

