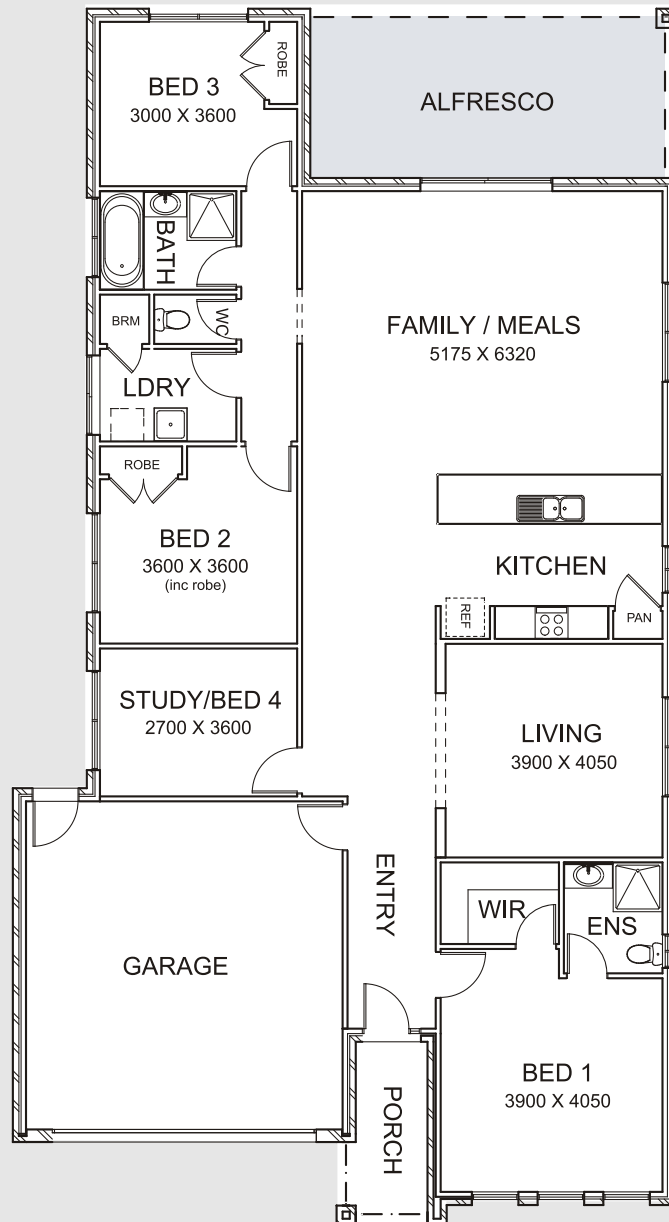


This home includes:

- Alfresco Area
- 3 Bedrooms
- 2 Bathrooms
- Study/Bed 4
- Double Garage
- Remote Sectional Door
- Convenient Entry from Garage
- Paved Driveway & Pathway



House Area
174.15sqm
 Garage
39.25sqm
 Alfresco
20.61sqm
 Portico
4.90sqm
 Total
238.92sqm



**Serenity
 projects**

www.serenityprojects.com.au

PRIME GROUP OF COMPANIES

