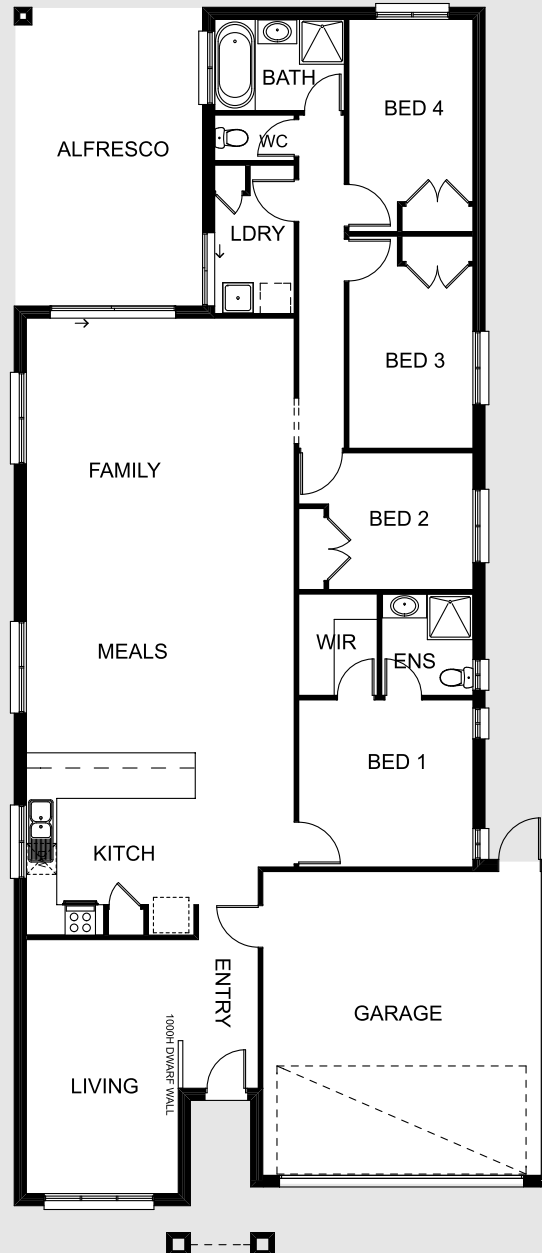


homes-victoria

This home includes:

- Alfresco Area
- 4 Bedrooms
- 2 Bathrooms
- Double Garage
- Remote Sectional Door
- Convenient Entry from Garage
- Paved Driveway & Pathway



House Area
166.37sqm
Garage
36.58sqm
Alfresco
21.95sqm
Portico
4.78sqm
Total
229.67sqm

ports



Serenity
projects

www.serenityprojects.com.au

PRIME GROUP OF COMPANIES

