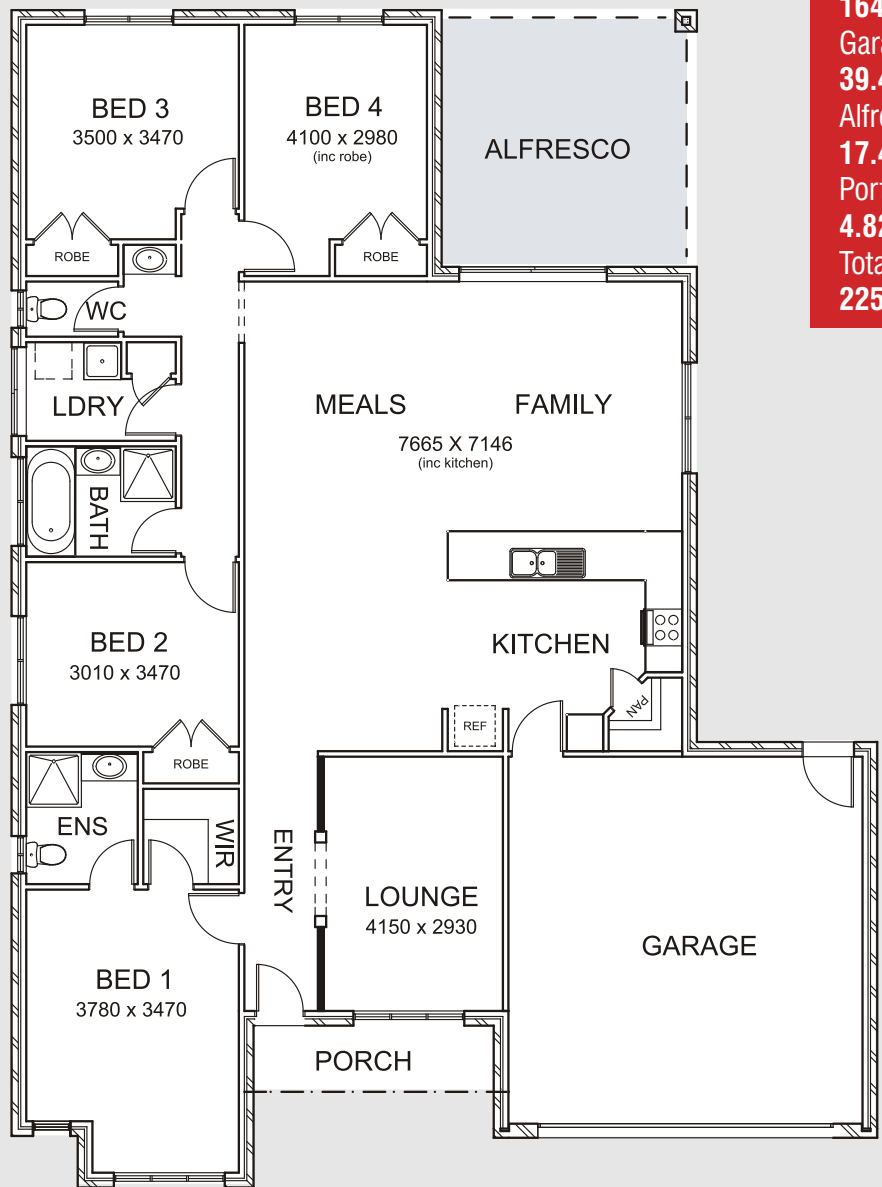


## This home includes:

- Alfresco Area
- 4 Bedrooms
- 2 Bathrooms
- Double Garage
- Remote Sectional Door
- Convenient Entry from Garage
- Paved Driveway & Pathway



House Area  
**164.07sqm**  
 Garage  
**39.47sqm**  
 Alfresco  
**17.46sqm**  
 Portico  
**4.82sqm**  
 Total  
**225.81sqm**

seaford



Serenity projects

www.serenityprojects.com.au

PRIME GROUP OF COMPANIES

