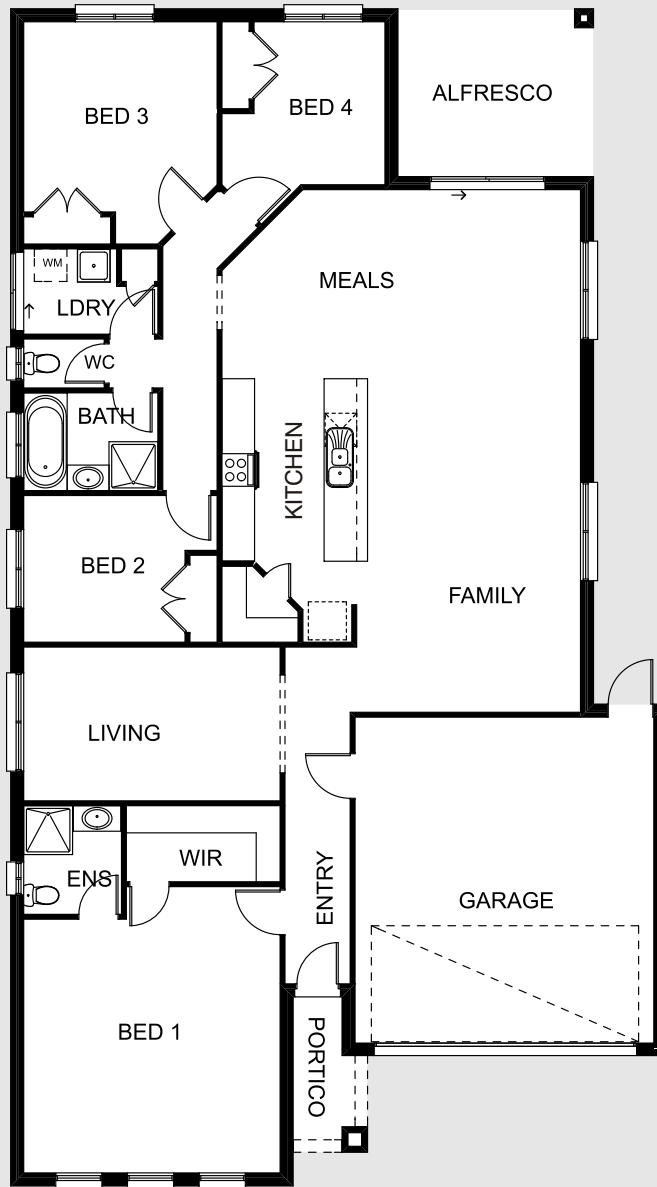


This home includes:

- Alfresco Area
- 4 Bedrooms
- 2 Bathrooms
- Double Garage
- Remote Sectional Door
- Convenient Entry from Garage
- Paved Driveway & Pathway



House Area
179.69sqm
 Garage
36.20sqm
 Alfresco
11.12sqm
 Portico
4.26sqm
 Total
231.27sqm

homes



Serenity
 projects

www.serenityprojects.com.au

PRIME GROUP OF COMPANIES

