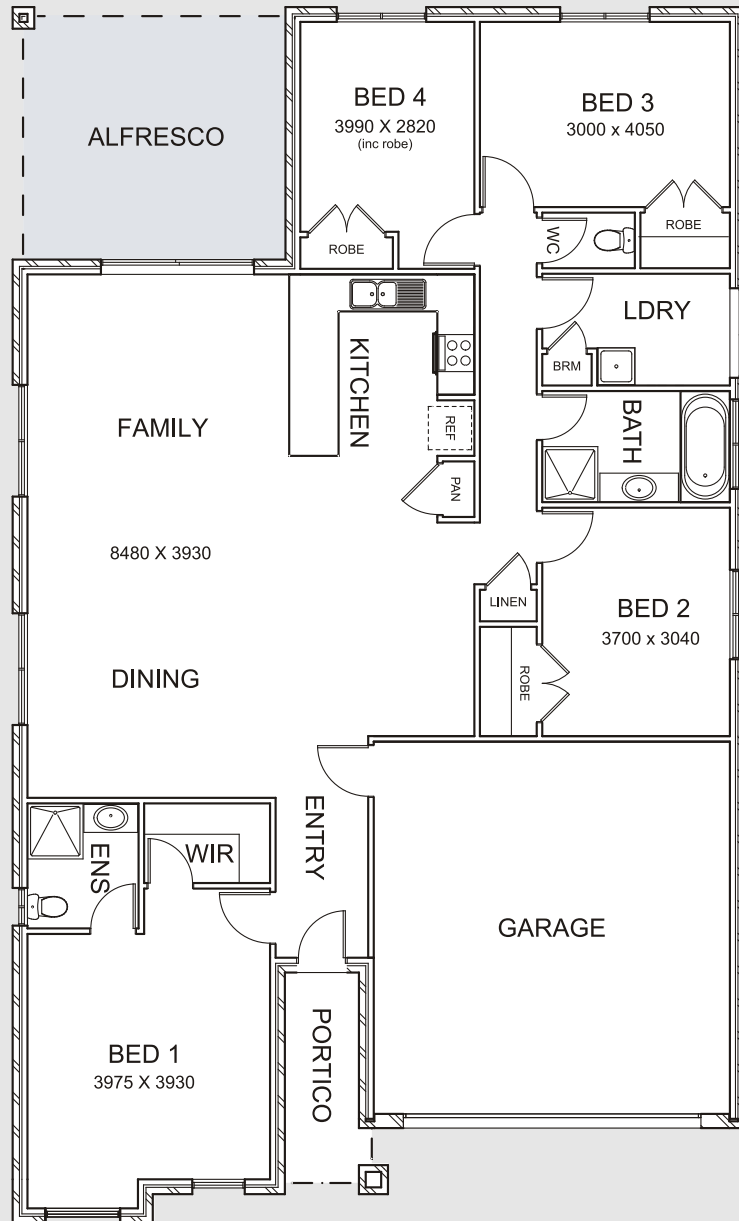


homes-victoria

This home includes:

- Alfresco Area
- 4 Bedrooms
- 2 Bathrooms
- Double Garage
- Remote Sectional Door
- Convenient Entry from Garage
- Paved Driveway & Pathway



House Area
160.15sqm

Garage
39.30sqm

Alfresco
18.69sqm

Portico
4.81sqm

Total
222.95sqm

stephanie



Serenity projects

www.serenityprojects.com.au

PRIME GROUP OF COMPANIES

